

CT-2

230 Vac CONTROL UNIT



CODE	DESCRIPTION
CT-2	For two motors for swing gate, 230 Vac, with electric clutch and connector for receiver (1 pc)

TECHNICAL DATA		CT-2
ELECTRICAL DATA		
input power	Vac/Hz	230/50
output power accessories	Vac (Vdc)	24
max motor power	W	700+700
max working time	sec	60
max pause time	sec	2 - 180
obstacle detection		-
GENERIC DATA		
protection degree	IP	54
dimensions (L - P - H)	mm	222 - 110 - 275
operating temperature	°C	-20 + 55

PLUS

Easy programming with trimmers and dip-switches

Simple and robust electronics

Plug-in logic board

Led indicator of commands and safety devices

Adjustable electric clutch

Plug-in radio receiver (RXI23X)

Open gate indicator output

Flashing light and courtesy light output

Electric limit switches

OPEN - CLOSE inputs

Pedestrian open input

ACCESSORIES



RX4X
4 channels plug-in receiver

PC 1



RXM23X
Universal receiver 2 channels, fix o rolling code

PC 1



BOXKEY
Plastic box for two motors control unit

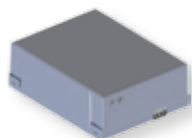
PC 1



BOXKEYS
Plastic box for one motor control unit

PC 1

24 Vdc ACCESSORIES



KBP
Battery back-up kit for 14A control unit

PC 1



KITFIXBATT
Kit fixing batteries 24 Vdc (for BOXKEY)

PCS 2