

RX2H

MINIATURIZED HOME AUTOMATION CONTROL UNIT



CODE	DESCRIPTION
RX2H	Miniaturized control unit for management of awnings, shutters, and wireless lighting systems (1 pc)

TECHNICAL DATA		RX2H
ELECTRICAL DATA		
reception frequency	MHz	433,92
power	Vac	230
range	m	35
relay contacts max supply	A	5 (Cos $\varphi=1$) resistive load
relay contacts max voltage	W	1200
GENERIC DATA		
protection degree	IP	20
dimensions (L - P - H)	mm	42 - 21 - 36
operating temperature	°C	-20 + 55

PLUS

For the control of 230Vac/110Vac main voltage loads with power up to 1000W

2 independent channels

Easy programming with led and buzzer

Memorize up to 30 transmitters

Internal connection plug

Manage two time sensors for automatic switch-off

Maximum flexibility in the single control of two outputs with different modes: mono-stable, bi-stable, temporized, motor control

Possibility to combine with wired control points for lighting

ACCESSORIES



RX4X
4 channels plug-in receiver

PC 1



RXM23X
Universal receiver 2 channels, fix o rolling code

PC 1



BOXKEY
Plastic box for two motors control unit

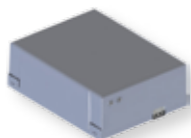
PC 1



BOXKEYS
Plastic box for one motor control unit

PC 1

24 Vdc ACCESSORIES



KBP
Battery back-up kit for 14A control unit

PC 1



KITFIXBATT
Kit fixing batteries 24 Vdc (for BOXKEY)

PCS 2