

CT202

230 Vac CONTROL UNIT



| CODE | DESCRIPTION |
|-------|---|
| CT202 | For two motors for swing gate, 230 Vac, with electric clutch and connector for receiver, slowdown in opening and closing (1 pc) |

| TECHNICAL DATA | | CT202 |
|--------------------------|-----------|-----------------|
| ELECTRICAL DATA | | |
| input power | Vac/Hz | 230/50 |
| output power accessories | Vac (Vdc) | 24 (24) |
| max motor power | W | 700+700 |
| max working time | sec | adjustable |
| max pause time | sec | 0 - 900 |
| obstacle detection | | yes |
| GENERIC DATA | | |
| protection degree | IP | 54 |
| dimensions (L - P - H) | mm | 222 - 110 - 275 |
| operating temperature | °C | -20 + 55 |

PLUS

Same programming logic for all control boards CT102, CT202, 14A with run inversion via software

Amperometric obstacle detection with run inversion

Standard or programmable slowdown in opening and closing

Pedestrian programmable automatic closing

Separate OPEN-STOP-CLOSE inputs and PP - Pedestrian input

Safety edge 8,2K ohm NC - photo 1 and photo 2

Inputs and safety devices LED visualization

Flashing light output fixed or flashing

LED courtesy light output or spia open gate indicator

Programmable electrolock or power contact (5A)

Pressure control for hydraulic motors

3 digit display

Optional phototest

Optional test for safety edge

New plug-in radio receiver 4 channels RX4X

ACCESSORIES



RX4X
4 channels plug-in receiver

PC 1



RXM23X
Universal receiver 2 channels, fix o rolling code

PC 1



BOXKEY
Plastic box for two motors control unit

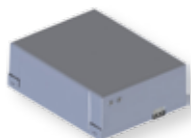
PC 1



BOXKEYS
Plastic box for one motor control unit

PC 1

24 Vdc ACCESSORIES



KBP
Battery back-up kit for 14A control unit

PC 1



KITFIXBATT
Kit fixing batteries 24 Vdc (for BOXKEY)

PCS 2